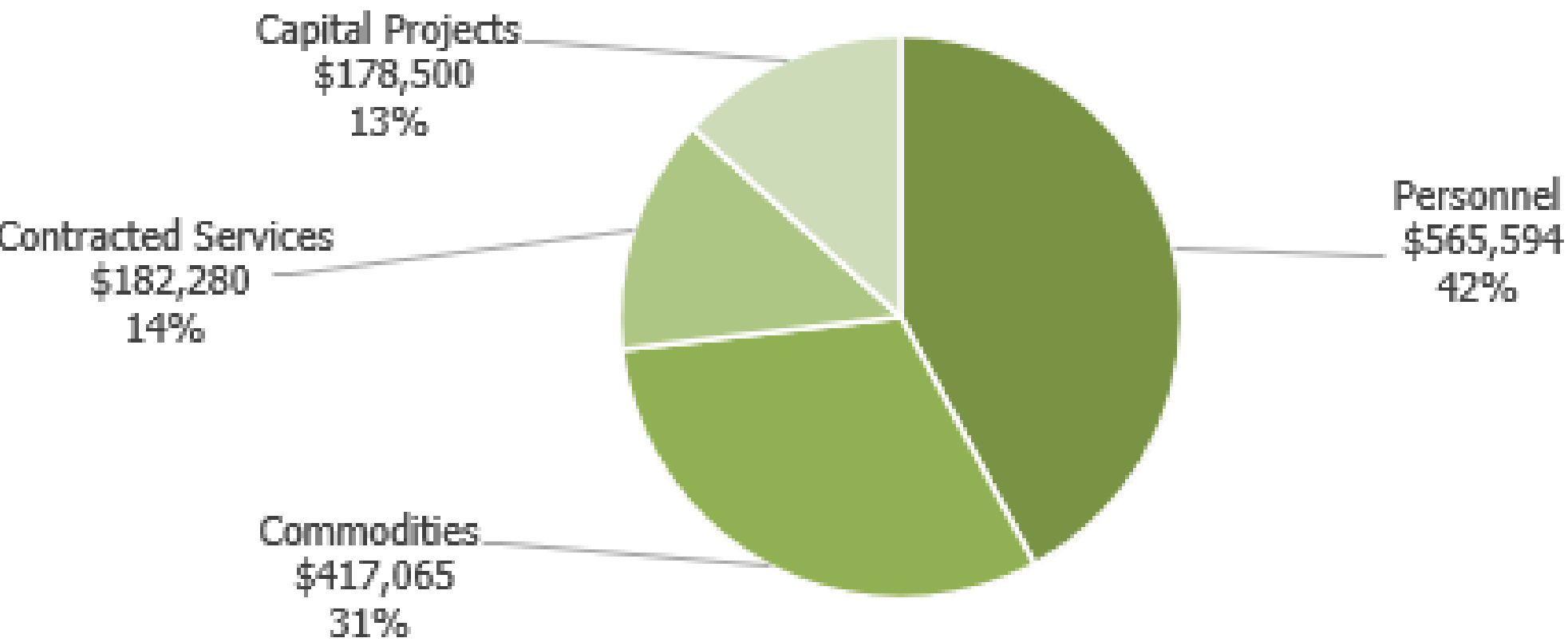


SMITHVILLE PARKS & RECREATION

Matt Denton, Parks and
Recreation Director

Parks and Recreation - FY2025 Adopted



MATT DENTON
Parks & Recreation Director



ALEX THRELKELD
Recreation Manager



OPENING
Park Crew Leader



CHASE STEWART
Maintenance Crew II



ASPEN RYAN
Recreation Coordinator



CHRIS BECKHAM
Maintenance Crew II



AMY ALEXANDER
Senior Services Coordinator

PARKS AND RECREATION

OVERVIEW

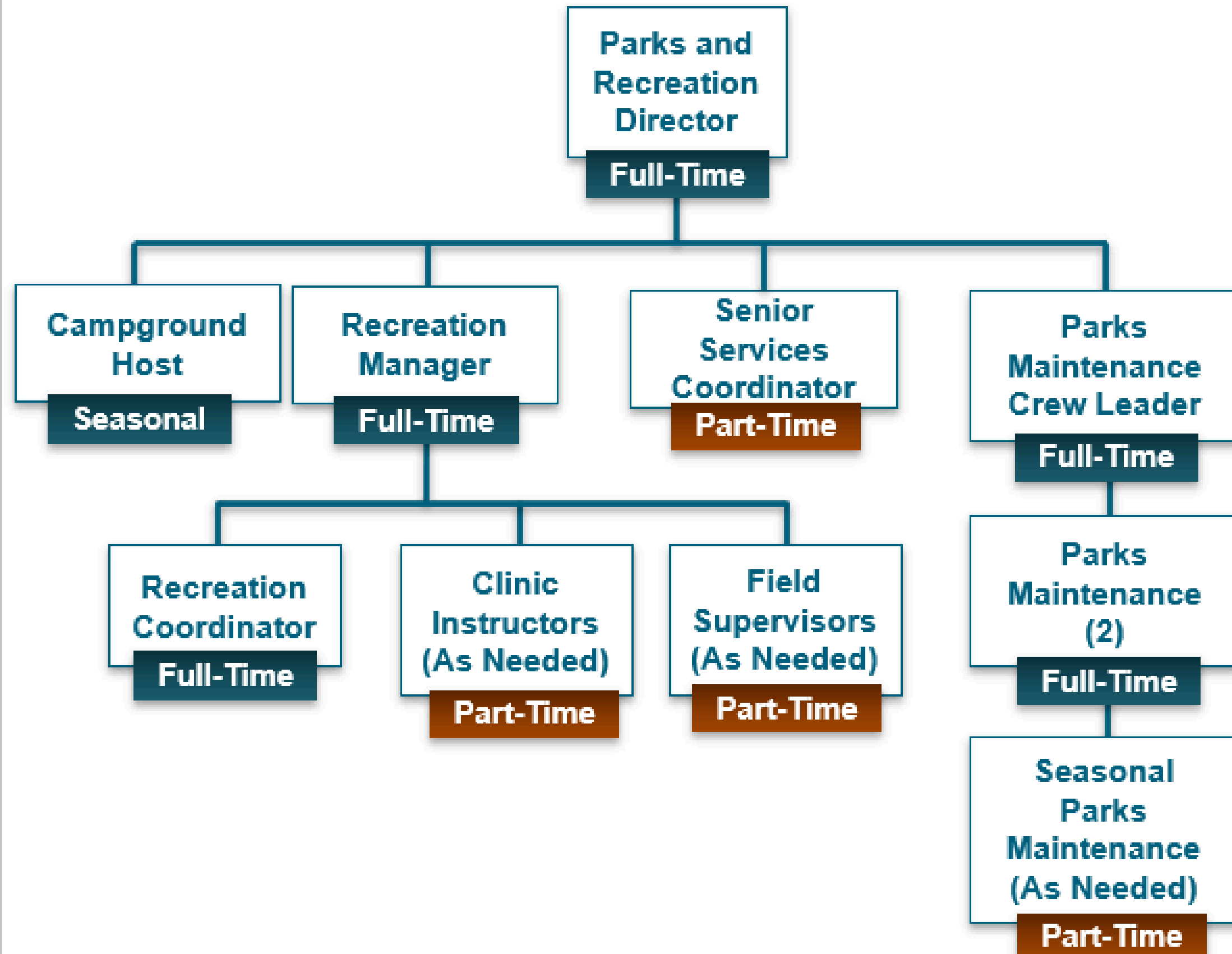
Mission: Smithville Parks & Recreation has a mission to create experiences through parks and natural spaces and leisure opportunities for the entire community.

SPR is responsible for maintaining 9 city parks, including Smith's Fork Campground and over 300 acres of parkland. Smithville Parks and Recreation offers four park shelter houses, use of our maintained baseball fields, trails, restrooms and various sizes of soccer fields/football fields.

The SPR manages access to the Smithville Senior Center to host birthday parties, family reunions, graduation parties, meetings, and more. The Parks & Recreation also oversees the Senior Fitness Classes.

The SPR recreation department serves over 1,100 participants annually through a variety of youth and adult recreation sports leagues and programs.

Parks and Recreation Staff



PARKS AND RECREATION MASTER PLAN

The City of Smithville amended Future IQ's contract in 2020 to complete the Parks and Recreation Master Plan. Future IQ completed the Cities Comprehensive Plan in 2019.

Future IQ also worked with Landworks Studios to help complete the Master Plan.



.5%
Sales Tax



1,000+
Survey
Responses



PARKS AND RECREATION COMMITTEE

The Committee shall advise the Board of Aldermen on any improvements or additions they deem important for the City Parks and Recreation system and may provide reports or other documents to the Planning Commission related to any improvement or amenity in accordance with the Parks Master Plan.



**Emerald
Ridge**
Project



7
Committee
Members



PARKS AND RECREATION LEGACY FUND

The Smithville Legacy Fund was established in 2013. The Smithville Legacy Fund was established to serve as a community foundation. The fund exists to “improve the quality of life in the City of Smithville and the surrounding areas.”



**Community
Awards
Banquet
Goal**



**4
Board
Members**

The Smithville Legacy Fund Advisory Board members will work with stakeholders to prioritize expenditures from the fund.

**SUPPORT THE FUTURE OF
SMITHVILLE PARKS & RECREATION**
MAKE A DONATION TO THE PARKS LEGACY FUND



HERITAGE PARK AMPHITHEATER - smithville,mo

YOUR PARKS

FIND YOUR FAVORITE





Phase 1

Master Plan



DIAMOND CREST PARK AND OK RAILROAD TRAIL

Phase 1 of the master plan was to complete Diamond Crest Park

A splash pad was donated as part of the City's Payment of Lieu of Dedication

City is providing a playground, Sidewalk and Fencing. Neighboring housing development is donating a parking lot.

In 2024 the City was awarded a Recreational Trails Program Grant from DNR to construct the OK Railroad Trail. This was the old Railroad that went through Smithville



Phase 1

Master Plan



EMERALD RIDGE PARK

Phase 1 of the master plan was to upgrade Emerald Ridge Park

The old playground was installed in 2000

The Parks and Recreation Committee worked to design and approve plans for the new park

The new park was completed and opened in March 2025



Phase 2

Master Plan



HERITAGE PARK PARK

(320 East Main) Located on Main Street (DD Highway), just east of Downtown, Smithville.

Two lighted ball fields

One unlighted ball field

One shelter

One Basketball Court

Playground

A half-mile paved walking trail

Open green space (soccer fields)

One restroom

Three parking lots



Phase 3

Master Plan



SMITH'S FORK PARK

Smith's Fork Park is a 250 plus acre park that the city leases from the United States Army Corps of Engineers.

One lighted and one unlighted ball fields

Soccer area

A lighted football field

Two shelters with electricity

Two shelters without electricity

Two restrooms

Skateboard park

A self-supplied driving range

Smith's Fork Park Campground

A Scout Special Use Area

Girl Scout Special Use Area

Fishing from the Smithville Lake Dam Spillway.



SMITH'S FORK

CAMPGROUND

Full-service campground. Each site has electricity, water, and sewer connections
restroom/shower house on site
50/30/20 AMP sites
Camp Host Services
Campground events
\$270,000 in revenue



49 Sites
Upgraded in 2 years



42%
Occupancy Rate
*Up 2.5% from 2023

In the winters of 2020 and 2021, 49 sites were upgraded to 50-amp. From 2020 to 2021 the occupancy rate increased by 9%



LAKE REMOTE

TRAIL

Part of Smith`s Fork Park
3.95 miles of improved trails in a 40-acre setting
trails with three different surfaces
Ag-Lime, Maintained 10-Foot Cut and Single Track
Fishing at Lake Remote
Girl Scout Special Use Area



60 Visitors
Daily Average



412 Peak
visitors on May 3



Phase 3

Master Plan



REMEMBERANCE

PARK

Located at the corner of 100 North Bridge Street and Main Street.

A veterans memorial donated in 2007 by Mayor and Mrs. Charles Hitchborn

A Gazebo

HELVEY

PARK

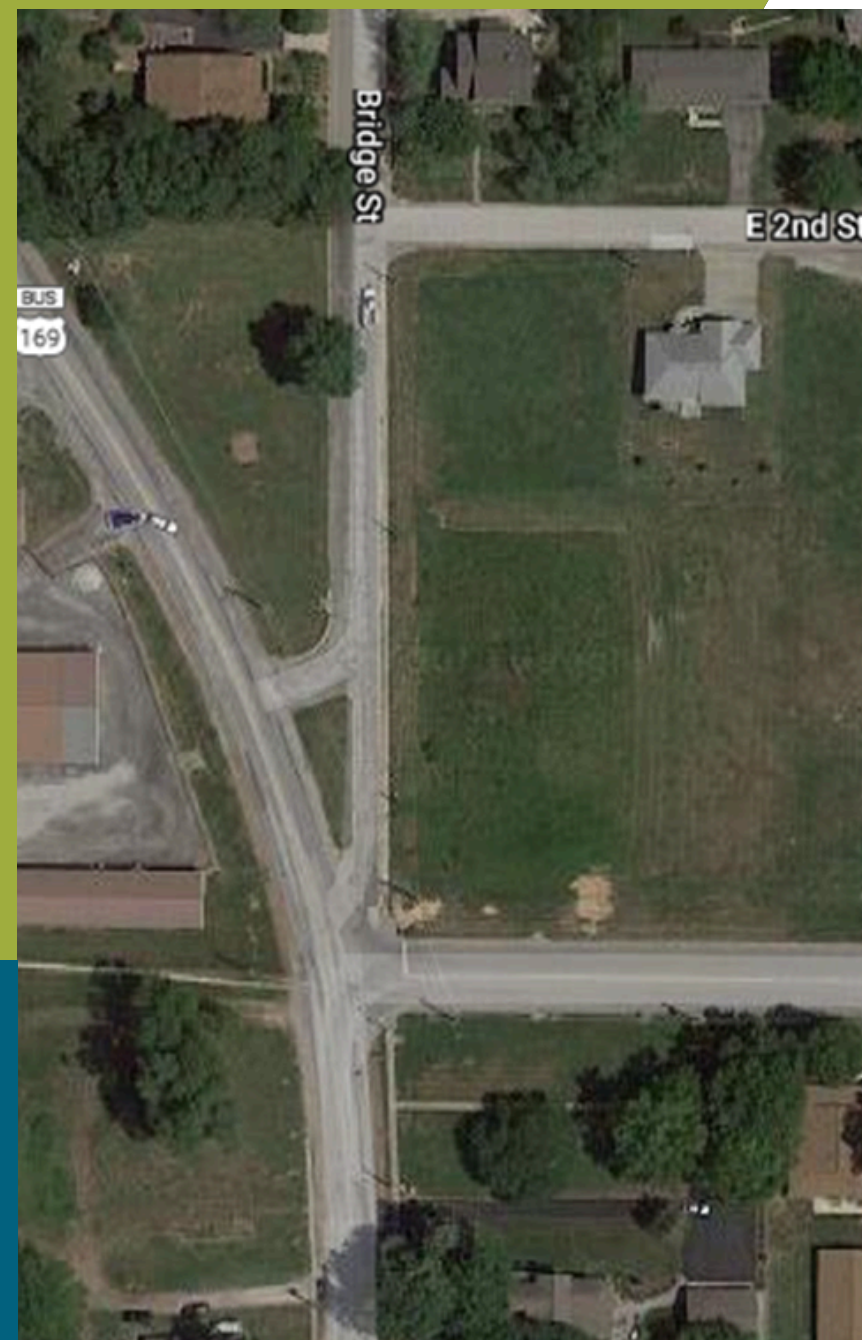
1 Helvey Drive

Helvey Park offers approximately 15 acres of parkland, including a 10-acre stocked lake, one shelter, picnic tables, and large shade trees.



Phase 3

Master Plan



WILDFLOWER

PARK

6.35 Acres on Wildflower Dr.
Close to Eagle Heights Elem.
Small retention pond on the property
Wildflower Street

HUMPHREY & NANCY SMITH

PARK

1.62 A divided by Bridge St.



COURTYARD PARK

Located in the center of Smithville's Downtown Heritage District on Main Street (DD Highway).

Ali Kemp Memorial Stage with electricity

9/11 Memorial

Perimeter electrical boxes

Shade trees

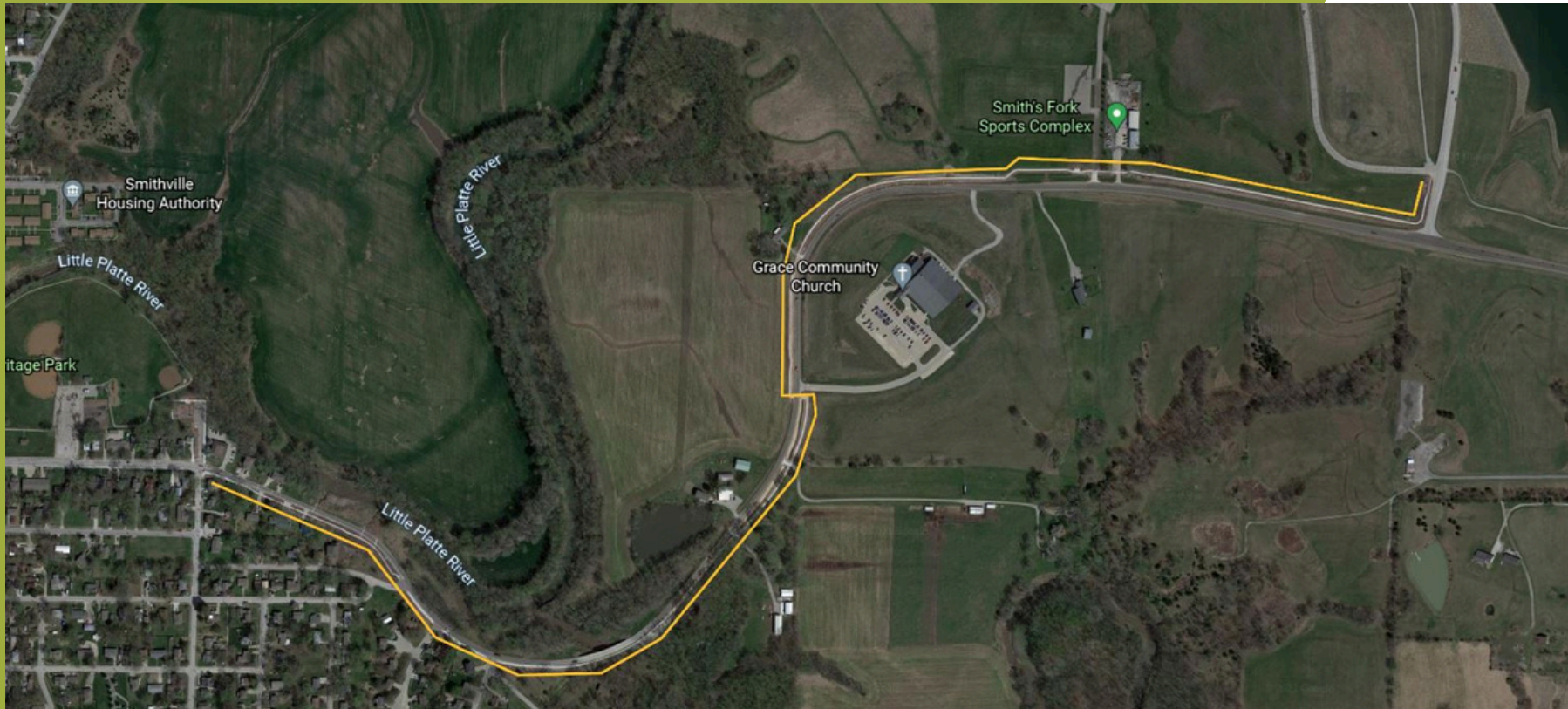
Picnic tables

Park benches

Restroom



Future
Master Plan



MAIN STREET TRAIL

1.4 Mile Trail that connects Downtown Smithville to Smithville Lake and Clay County Parks 34 Miles of trails.

Recreational Trail Program Grant.

Tied into 2018 bond for Street Scape Phase 1.

8-10 FT wide Concrete Trail with water fountain, bike fix-it station, bike rack and benches.

Running, Walking, Biking



40 Visitors
Daily Average



176 Peak
visitors



SMITHVILLE SENIOR CENTER

Grant Funded
Events

Includes a large common room with
chairs and tables for 50 guests

Large residential kitchen

Senior Lunches and Senior Fitness

Classes M-F (5-Days a week started Feb.
2025)



82

Reservations in 2024



30 Guests

M-F Fitness Class



SMITHVILLE SPECIAL EVENTS

Smithville is the host to numerous events every year. Our downtown Courtyard Park is the perfect destination for festivals, vendor fairs, and concerts. We also offer our spacious Smith's Fork Park greenspace for outdoor concerts and special events.



29 Events
in 2024



4000 PPL
Haunted Campground



FACILITY MANAGEMENT

Facilities can be used on a first-come first-serve basis if available or can be guaranteed by a reservation

- does not include Senior Center

Reservations can be made online

Reservations open on January 1 for the full calendar year.



13 Sites
across 9 parks



\$15-\$50
Range of cost

2024 Facility Rentals						
	Park Shelters	Senior Center	Baseball Fields	Soccer Fields	Scout Areas	Total Rentals
January	0	2	0	0	0	2
February	3	6	20	0	2	31
March	5	6	22	0	1	33
April	13	4	0	0	0	17
May	15	7	3	0	4	29
June	16	8	1	0	4	29
July	11	2	14	0	0	27
August	8	6	40	9	0	63
September	13	8	22	8	1	52
October	6	8	6	4	1	25
November	0	12	1	0	0	13
December	0	13	0	0	0	13

YOUTH & ADULT SPORTS

Video

Little Kickers Soccer Clinic (offered twice per year)

Youth Soccer League (offered twice per year)

Youth T-Ball (offered twice per year)

Youth Baseball & Softball League

Youth Volleyball

Youth Basketball

Total: 1241 (2024) || Last season total: 1120 (2023)

We are close to reaching max enrollments in almost all sport offerings.

What is new:

- Partnering with AYSO for Little Kickers Clinic (professional instructors = can accept more children per session)
- Senior Fitness Classes Expanded
- Little Hoopsters Basketball Clinic (3 more instructors added = can accept more children per session)

Youth Sports Registrations

	Spring Soccer	Spring Soccer Clinic	Spring T-Ball	Spring Baseball	Spring Softball	Fall Soccer	Fall Soccer Clinic	Fall T-Ball	Fall Volleyball	Winter Basketball	Winter Basketball Clinic	Total Participants
2021	180	40	140	105	71	178	32	68	49	132	New in 2024	1,005
2022	221	71	152	116	89	169	40	61	54	135	New in 2024	1,110
2023	228	50	139	109	77	195	32	87	53	150	New in 2024	1,120
2024	262	40	140	91	81	230	50	107	46	154	40	1,241
2025	302	30	136	92	107	178			62		44	951



YOUTH & ADULT PROGRAMS

2024 Program & Event Registrations			
January 4, 11, 18, 25	Sew Cute Club	20	FULL
January 19	Flick & Food	35	FULL
January 24	Parent & Me Painting	50	FULL
February 5	Watercolor Workshop: Dandelion Sunset	27	
February 12	Watercolor Workshop: Winter Landscape	22	
February 19	Watercolor Workshop: All the Florals	30	FULL
February 26	Watercolor Workshop: Citrus Splash	23	
March 1, 8, 15, 22	March Pickleball Lessons	16	FULL
March 29	Adult Egg Hunt	100	FULL
April 5, 12, 19, 26	Pickleball Lessons	12	FULL
April 22	Little Sprouts: Earth Day	90	FULL
April 6, 13, 20 28	Beginner 5K Training	8	
May 4	Mother-Daughter Picnic + Paint	36	FULL
May 10	Movie at the Courtyard	60	
May 22	Adult Pick-up Basketball	12	
June 1	Watercolor Paint 2 Give 1	13	
June 5	Learn to Kayak	8	
June 10-14	Challenger Soccer Camp	40	
June 14	Adult Pickleball Tournament	0	
June 19	Learn to Kayak	8	
July 4	Smithville Fireworks Show	1,000	
July Mondays	Breakfast in the Park	100	
July Tuesdays	Painting in the Park	80	FULL
July Wednesdays	Sunset Yoga	60	
July Thursdays	Science in the Park	80	FULL
July Fridays	Popsicles at the Splashpad	80	FULL
July Tuesdays	Watercolor Workshop	44	
July 12	Open Play Pickleball	24	FULL
July 14-Aug 18	Beginner 5K Training	5	
August 3	Watercolor Paint 2 Give 1	6	
August 2, 9, 16, 23	August Pickleball Lessons	12	FULL
September 6	Open Play Pickleball	18	
September 29	Symphony in the Park	20	
October 2, 9, 16, 23	Sew Cute Club	15	FULL
October 4	Open Play Pickleball	12	
October 11	Movie at the Courtyard	4	
October 12	Howl-O-Ween	100	
October 26	Smithville's Haunted Campground	3,000+	
November 1	Puzzle Palooza	40	FULL
November 1	Open Play Pickleball	10	
November 6, 13, 20	Kind Club	15	FULL
November 22	Adult Pickleball Tournament	8	
December 6	Candy Cane Quest	150+	
December 5-25	Holiday Lights Contest	7	
December 4, 11, 18	Candy Club	15	FULL
December 12	Open Play Pickleball	2	
Total Participants		5,517	



PARK MAINTENANCE

3 Full Time Maintenance

Hire PT in peak season

Maintaining 9 city parks, including Smith's Fork Campground and over 300 acres of parkland.

Four park shelter houses, 5 baseball fields, 3 football fields, trails, 5 restrooms and various sizes of soccer fields.

Zero restroom ROC in 4 years

Completed 14 water leaks in the campground in 2023

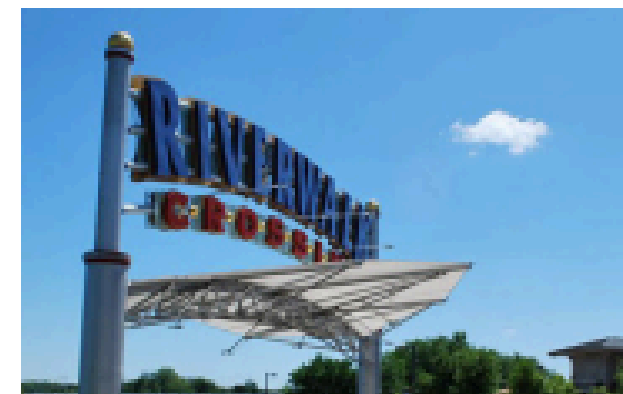
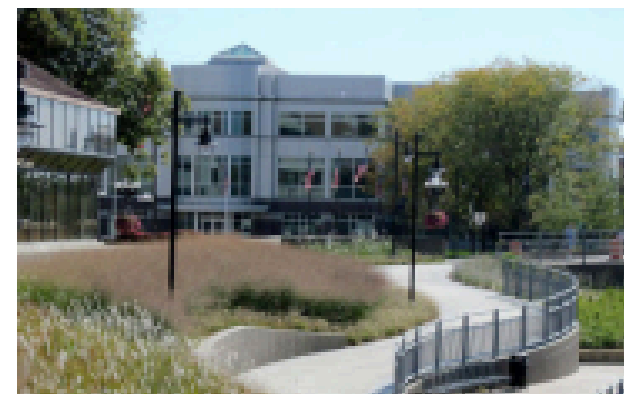
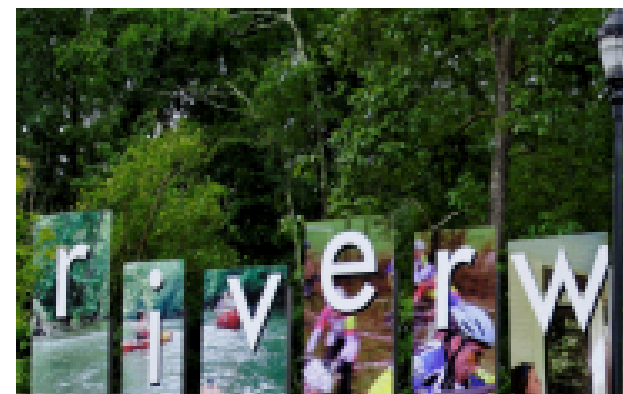
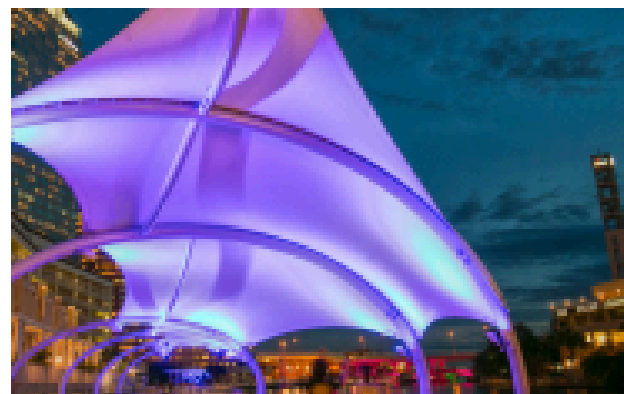
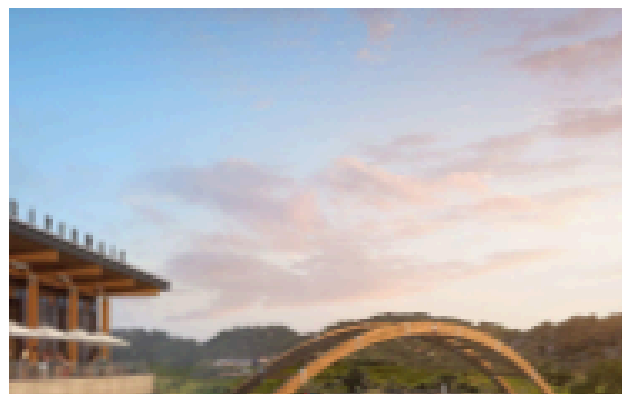
Maintain City Hall, Senior Center and Historical School House



WHAT IS COMING UP IN SMITHVILLE

Youth Sports
Smith's Fork Park Project
OK Trail Grant
Haunted Campground
Smithville Riverwalk





LEGEND	
1	TRAIL
2	FITNESS STATIONS
3	SAND VOLLEYBALL
4	PLAYGROUND
5	OVERLOOK
6	PUBLIC ART
7	PUBLIC ART OR BRIDGE
8	CROSSWALK
9	RIVER ACCESS / RENTALS

FAQ

- City of Smithville handles all City limit parks.
- Clay County Parks handles all Clay County Parks outside of City limits.
- Smith's Fork Park is owned by Army Corps. of Engineers.
- Trails
- Community Center Plans





MATT DENTON
Parks & Recreation Director



ALEX THRELKELD
Recreation Manager



OPENING
Park Crew Leader

PARKS AND RECREATION QUESTIONS

Parks Tour



CHASE STEWART
Maintenance Crew II



ASPEN RYAN
Recreation Coordinator



CHRIS BECKHAM
Maintenance Crew II



AMY ALEXANDER
Senior Services Coordinator